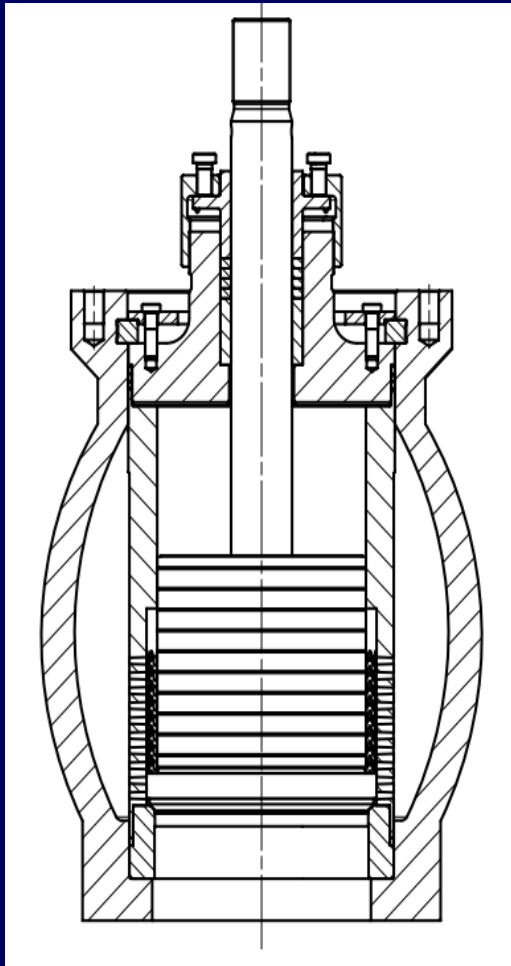


Bypass Valve Quick Change Seat

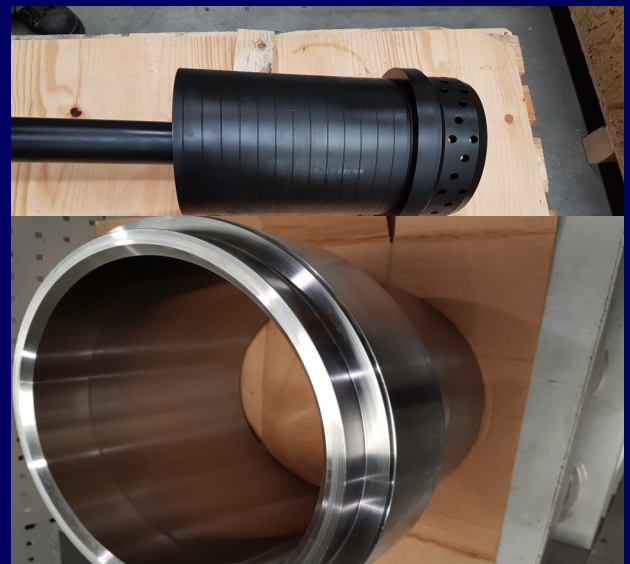
Upgrading a Welded in Seat to a Quick Change Configuration



Carter Process Control GmbH has been working with clients to reduce their maintenance and downtime by upgrading the Bypass Valves of CCI/BTG VLB & VLR valves to a quick change removable seat replacing the original welded in design.

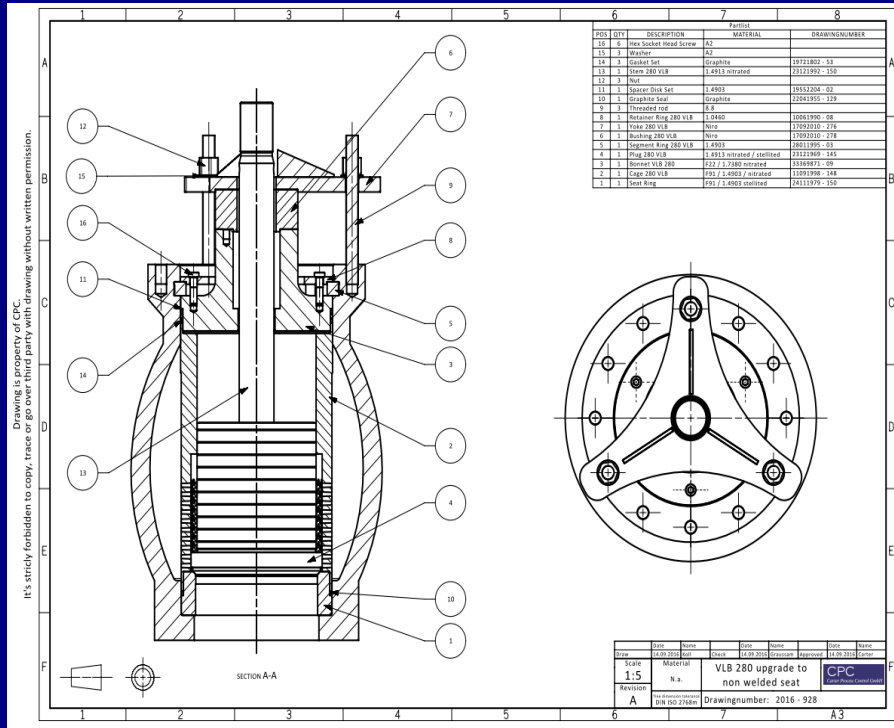
Why Choose CPC Upgraded Trim?

- **Reduced Maintenance**—Every time the standard seat needs to be replaced it has to be cut out as it is welded in the body meaning lots of special tooling/machines. The new seat then has to be welded back in which in turn causes a lot of time, equipment and certification to ensure it is done correctly.
- **Longer Service Life**—The new quick change trim is also upgraded to either Stellite overlaid or Inconel 718 giving a greater service life.
- **Experience** — CPC has completed many of these quick change trim upgrades Worldwide with great success.
- **Low Cost**— Our unique methods and simplified organisation allow for massive cost savings to be passed directly to our customers.
- **Stock**—CPC holds inventory of all soft goods kits for these valves either as standard construction or the upgraded version.



Bypass Valve Quick Change Seat

“Quick Change Trim Upgrade Experience”



CPC Delivered a complete quick change trim complete with all tooling, soft goods and fitting instructions. This trim upgrade was the largest one ever done and was for a VLB 280BTC valve. CPC has delivered many other sizes of the VLB upgrade.

**PERLHOFGASSE 2B/5
 GIESSHUEBL
 A-2372
 AUSTRIA**

TEL: +43 2236 864300

SALES@CARTERPROCESS.COM

WWW.CARTERPROCESS.COM

