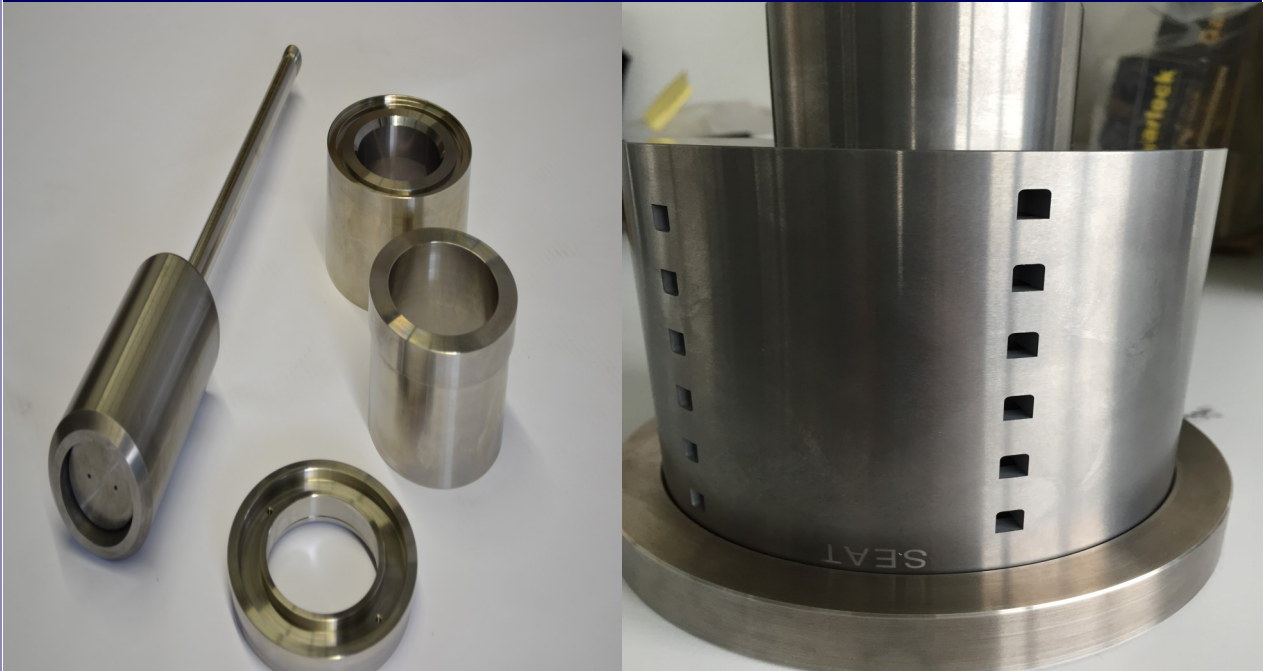


The JACK Solid Tungsten Carbide Choke Valve Trim.



Carter Process Control GmbH has designed and engineered a Solid Tungsten Carbide multi Stage Severe Service Trim for Control Choke Valves with "NO" brazing, EDM or Erosion.

As a non valve manufacturer but with extensive control valve trim manufacturing experience CPC is uniquely positioned to supply its trim to any valve manufacturer or end user that requires a severe service multistage pressure reduction trim.

Available in an almost limitless range of sizes and pressure reduction stages to fit the most arduous of operating conditions.

JACK Trim—Solid Tungsten Carbide 6% cobalt (1-3 micron WC)

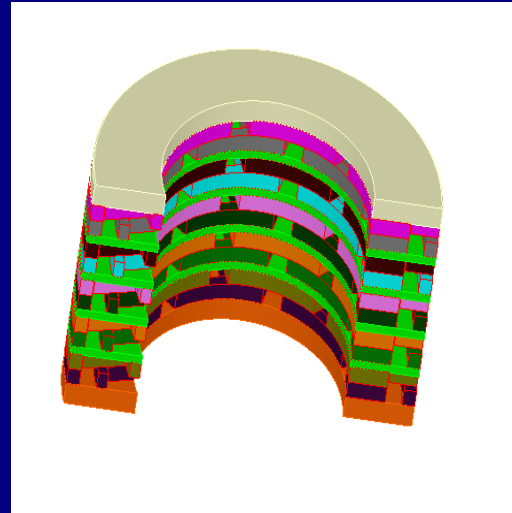
Plug—Solid Tungsten Carbide 6% cobalt (1-3 micron WC)

Seat Ring—Solid Tungsten Carbide 6% cobalt (1-3 micron WC) or insert

Stem—Duplex (F51), Inconel or other as required

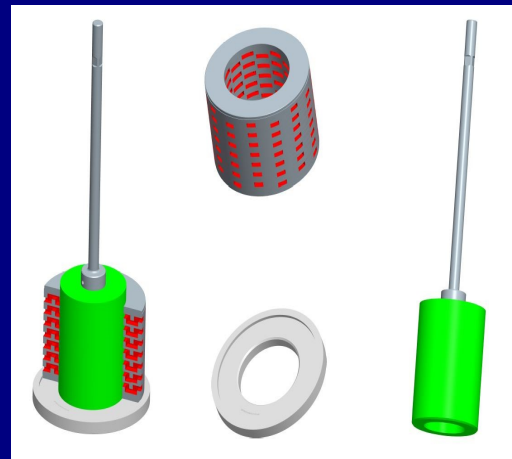
JACK = Joint Adverse Carbide Knowledge

Carter Process Control GmbH has designed and engineered a Solid Tungsten Carbide multi Stage Severe Service Trim for Control Choke Valves that requires no brazing, EDM or erosion which enhances the properties of the trim and therefore its operation compared to any other competitor offering in the market.



INCREASED PROCESS SECURITY?

- **ISO Certified**—Every CPC part is manufactured in ISO certified facilities and backed by a full 12 month international warranty.
- **Fast Response**—Our unique methods and in house design, engineering and innovative programs allow for rapid turnaround of normally long lead items.
- **Over 30 Years**— with more than 30 years experience in the Control and Choke valve market our technical knowledge is Unquestioned.
- **Unique Production**— Our unique, fast and innovative production methods bring increased benefits in both trim life and cost savings. Best in the industry delivery as standard.



**PERLHOFGASSE 2B/5
GISSHUEBL
A-2372
AUSTRIA**

TEL: +43 2236 864300

**EMAIL: SALES@CARTERPROCESS.COM
WEB: WWW.CARTERPROCESS.COM**

The Design



Our new advanced techniques of manufacturing have cut the time and cost for producing each **JACK** Trim to that of around half of other manufacturers lead times.

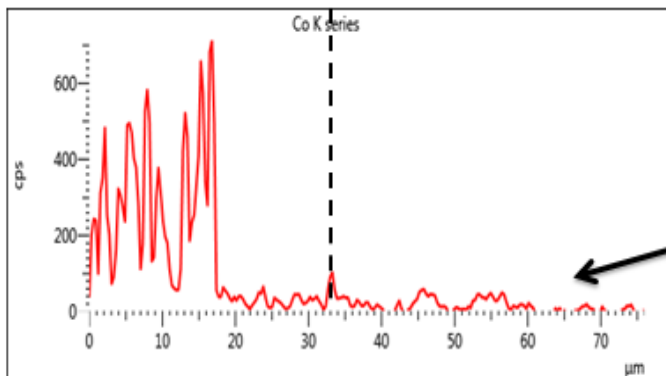
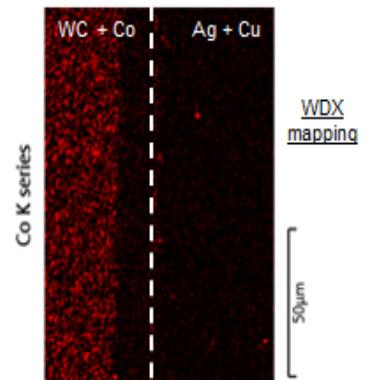
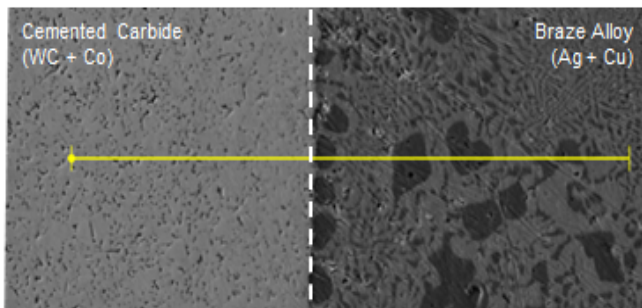
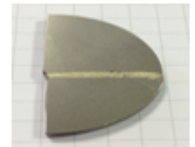
CPC means **performance**, **value**, and **customer service**.

Direct replacements for Disk Stack technology in Severe Service Choke Control Valves.

- 100% interchangeable
- Highest grade Materials
- European manufactured
- Superior Process Security

Why you should not use brazing!!

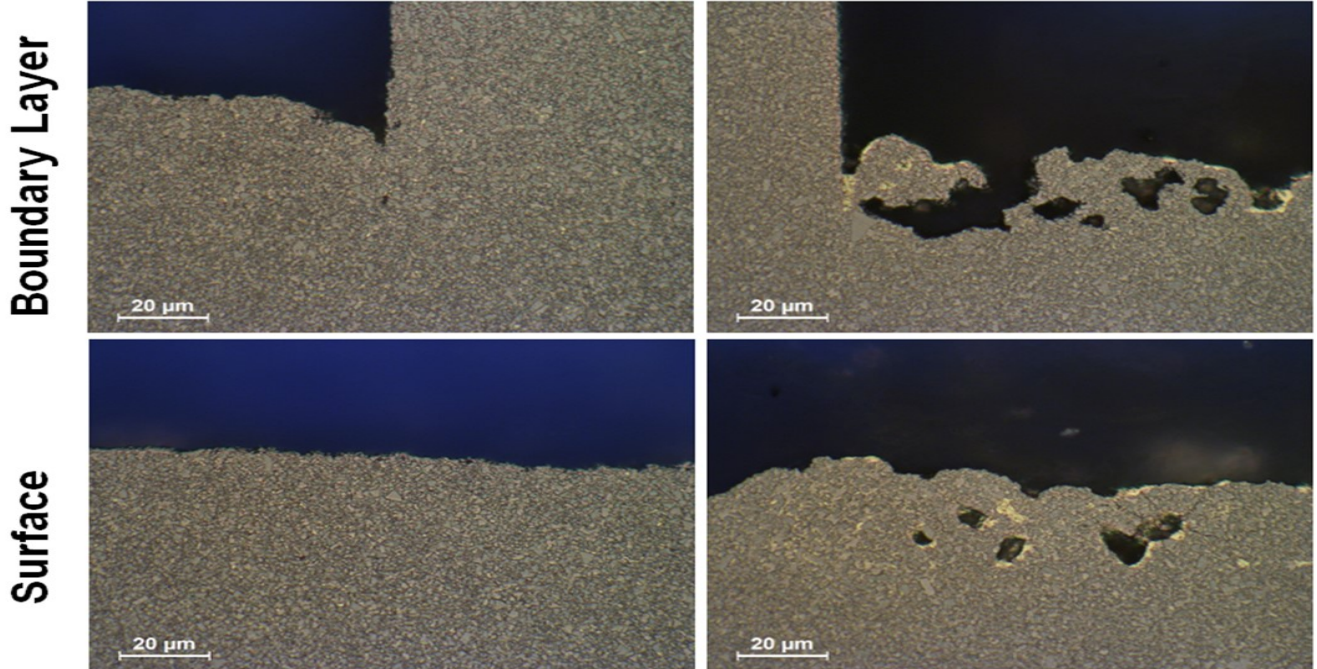
Diffusion Effects in Brazing Zone Cemented Carbide / Brazing Alloy



Lower Cobalt (Co) binder resulting in a brittle area at the brazing zone

Why you should not use Erosion Technique!!

Other



No microcracks due to erosion

No thermal stress due to erosion / brazing

INCREASED PROCESS SECURITY



A Truly Sintered Solid Tungsten Carbide Severe Service Multistage Trim

**PERLHOFGASSE 2B/5
GISSHUEBL
A-2372
AUSTRIA**

TEL: +43 2236 864300

