

***Upgrade Solutions Equals Improved Performance***



Wrong Material selection



Incorrect number of pressure reduction stages

When the wrong material selection is made or when the supplied trim is not produced correctly to the process conditions CPC can design and engineer the correct solution for the application increasing uptime and reducing maintenance costs.

***Get the right Control Valve Trim from CPC with an upgraded solution***



Power Station Example

CPC were approached by a UK Power Station to help solve an ongoing repeat failure of a number of Feedwater Control Valves (HP, MP & IP)

After technical evaluation of the operating conditions and the current OEM valve we identified and presented a number of improvements to the customer.

It was clear that the OEM technology for this application was not up to the job so CPC engineered a trim solution that would fit directly into the existing OEM valve with no alterations to the body or actuator assembly.

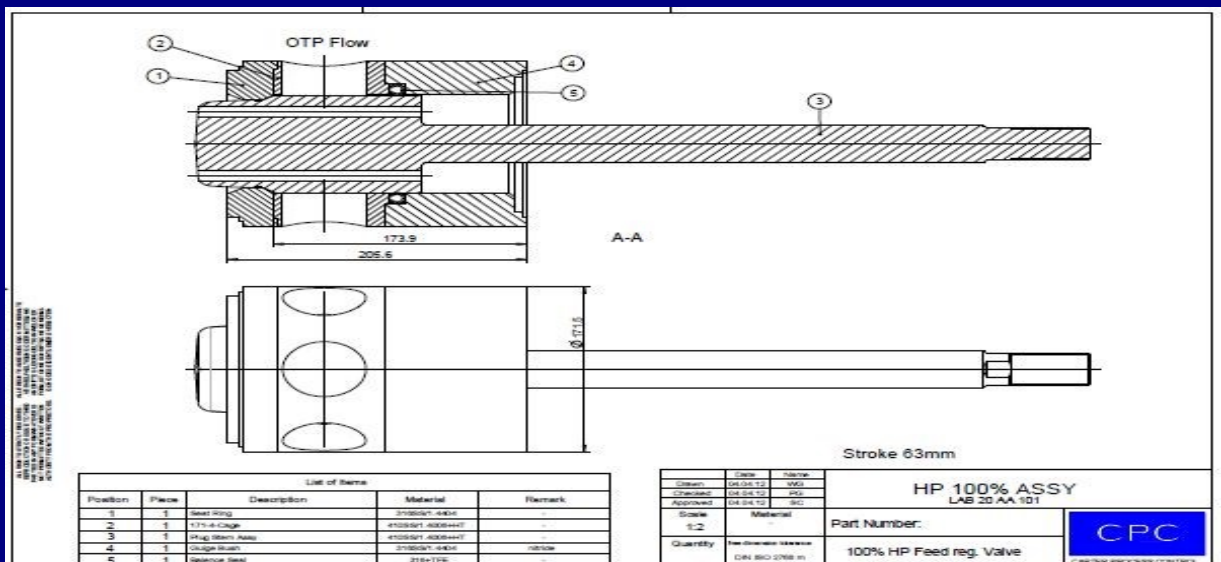
CPC's design included a number of improvements including relocating the balance seal off the plug and into the cage plus the addition of labyrinth grooves on the plug to help reduce the velocity at the seat area.



ENGINEERED TO SOLVE THE PROBLEM



- Piston rings failing on the plug
- Cavitation on the seat face
- CPC Design putting a Balance seal in the cage replacing the piston rings plus adding labyrinth grooves on the plug to reduce cavitation.





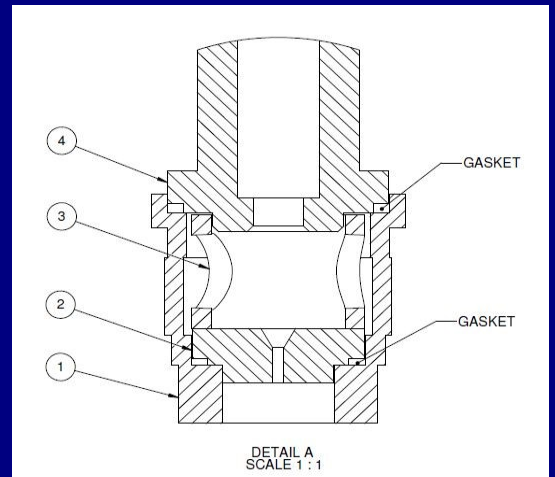
*Oil & Gas Example*

CPC were asked by an Oil & Gas operator in Australia to solve a big problem they were experiencing on an unmanned platform. The problem was with a very high pressure drop low flow valve that was constantly failing due to poor design.

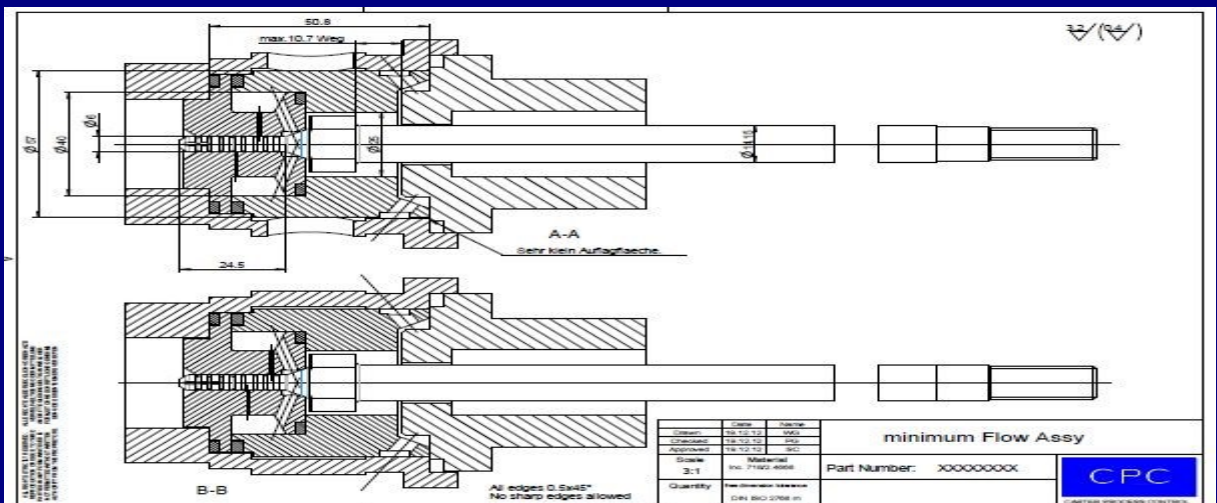
CPC quickly identified the root cause for the failure and presented the solution to the end customer. The customer involved a varied number of technical decision makers who all agreed the proposed solution was the right one to solve the problem.

CPC were given the order to manufacture as quickly as possible the solution so that the platform could get back to full production again. CPC completed the complete solution in under 4 weeks.

*OEM TRIM (Continually Failing/Poor Design)*



*CPC's Engineered Solution To Fix The Problem*



Even if the material selection is correct and the trim from the OEM is the best they can offer CPC can still make significant improvements to extend the service life of the trim

CPC can examine the application in detail and prepare a full technical investigation report for and propose the optimum solution for the customer.



**CPC Solves  
The Problem  
Again!!**



**PERLHOFGASSE 2B/5  
GISSHUEBL  
A-2372  
AUSTRIA**

**TEL: +43 2236 864300**

